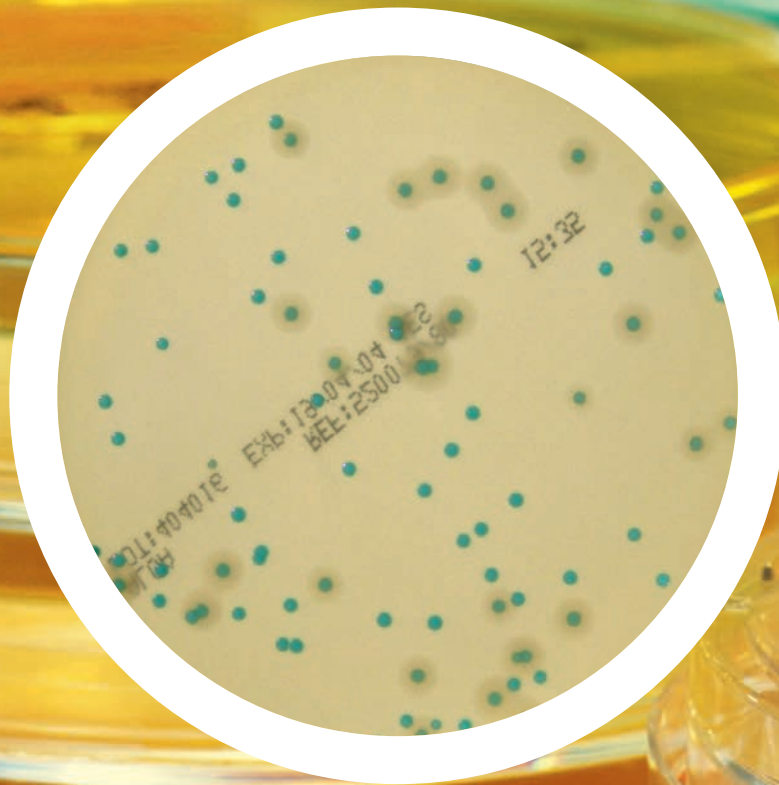




ALOA[®]

UNIQUE MEDIA

Detection, Enumeration and Confirmation of
Listeria spp. and *Listeria monocytogenes*



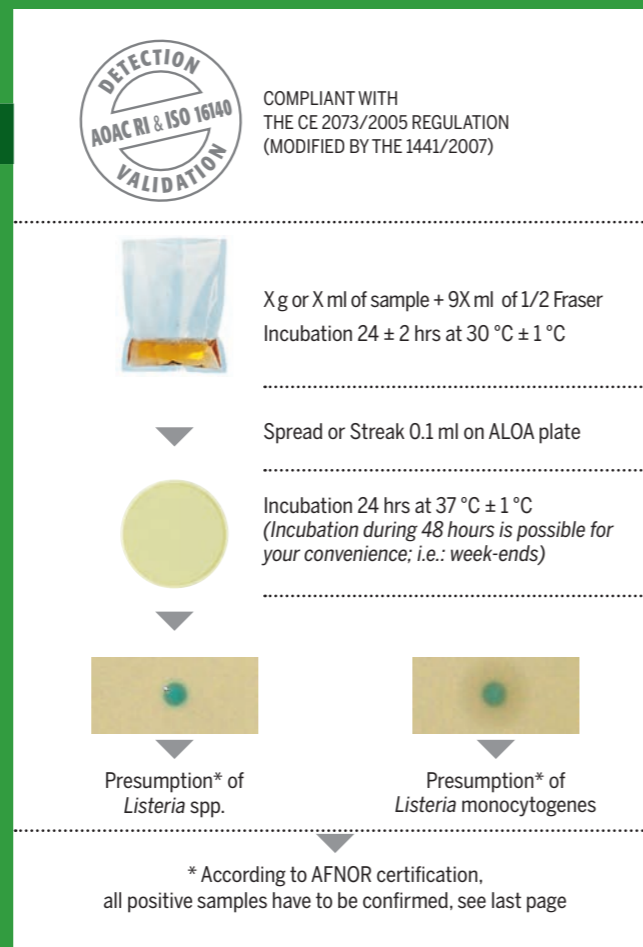
PIONEERING DIAGNOSTICS

2 METHODS TO FULFILL ALL YOUR LISTERIA TESTING NEEDS

ALOA® One Day

Detection of *Listeria monocytogenes* and *Listeria* spp. within 48 hours

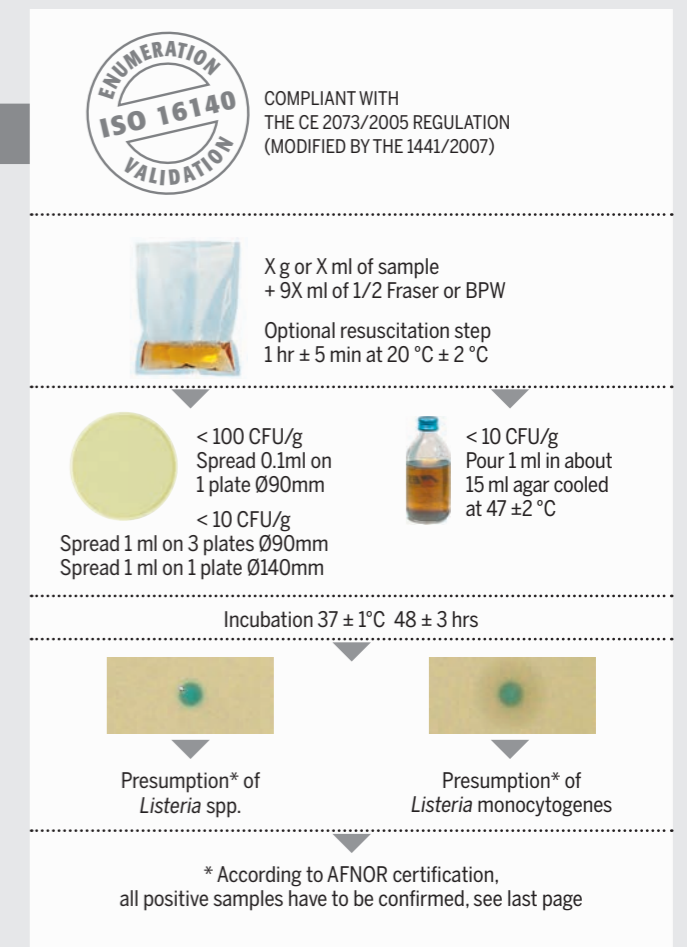
- Short protocol **ALOA® One Day** for food and environmental samples ISO 16140 and AOAC RI validated
- One day results after enrichment for negative and confirmed positive samples
- Easy protocol: 1 bag - 1 plate
- Flexibility & workflow optimization: broth bags can be held at +2 to +8°C for up to 72 hours after incubation and plates for up to 48 hours
- Simultaneous detection of *Listeria* spp. and *Listeria monocytogenes* on the same plate



ALOA® Count

Enumeration of *Listeria monocytogenes* and *Listeria* spp. within 48 hours

- Short protocol **ALOA® Count** for food and environmental samples ISO 16140 validated
- Time to result: 48 hours on ALOA plate
- Easy protocol: 1 plate per dilution
- Flexible and cost-effective:
 - Save one hour: optional resuscitation step
 - Optimize workflow: resuscitation in buffered peptone water or half fraser let you carry out detection & enumeration from the same suspension
 - Plates can be held at +2 to +8°C for up to 72 hours after incubation
- Different possibilities for low numbers <10 CFU/g:
 - 1 plate Ø90 by pour plate method
 - 1 plate Ø140 by spreading method
 - 3 plates Ø90 by spreading method



ALOA® MEDIUM IS COMPLIANT WITH ISO 11290 HORIZONTAL METHOD FOR THE DETECTION AND ENUMERATION OF LISTERIA MONOCYTOGENES






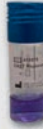

YOUR CONFIRMATION SOLUTIONS



CONFIRMATION OF *Listeria monocytogenes*



COMPLIANT WITH THE CE 2073/2005 REGULATION (MODIFIED BY THE 1441/2007)

CONFIRMATION OF *Listeria* spp.

NEXT DAY		SAME DAY		
ALOA[®] Confirmation  24 hours, cost effective	API[®] Listeria  24-hour identification	Rapidec[®] Listeria  positive from 4hrs negative from 6hrs	Fast Rhamnose  positive from 6hrs negative in 24hrs	VIDAS[®] LMO2  70 min

SAME DAY	NEXT DAY
BHI Broth + strip  < 6 hours	Palcam  24 hours, cost effective

for ALOA[®] One Day and ALOA[®] Count methods

ORDERING INFORMATION		DETECTION		ENUMERATION		
		L. mono	L. spp.	L. mono	L. spp.	
CHROMOGENIC MEDIA	AEB520080	ALOA [®] 20 plates Ø 90 mm	●	●	●	●
	AEB520079	ALOA [®] 120 plates Ø 90 mm	●	●	●	●
	AEB120082	ALOA [®] 10 plates Ø 140 mm	●	●	●	●
	AEB620088	ALOA [®] Count 5 x 180 ml (base + suppl)	●	●	●	●
	AEB150072	ALOA [®] BASE 500 g	●	●	●	●
	AEB150073	ALOA [®] BASE 5 kg	●	●	●	●
	AEB684420	ALOA [®] SUPPLEMENT 6 x suppl 500 ml base	●	●	●	●
	AEB484204	ALOA [®] SUPPLEMENT 4 x suppl 4L base	●	●	●	●
	AEB120100	ALOA [®] Confirmation 10 plates Ø 90 mm	●	●	●	●
CONFIRMATION	03700	Rapidec [®] Lmono (20 tests)	●		●	
	10300	API [®] Listeria	●	●	●	●
	30704	VIDAS [®] LMO2	●		●	
	415078	Fast Rhamnose (30 tests)	●		●	
	AEB110101	BHI 20 tubes 1 ml		●		●
416477	Listeria spp confirmation strips		●		●	
AEB522050	PALCAM 20 plates Ø 90 mm		●		●	
BROTHS	42042	Buffered Peptone Water 6 x 90 ml			●	●
	42043	BPW 6 x 225 ml			●	●
	AEB610309L	BPW 6 x 900 ml bottle			●	●
	42729	BPW 10 x 225 ml (mini-bags)			●	●
	AEB910303/4	BPW 4 X 3L (DILUBAG [™])			●	●
	AEB910305/2	BPW 2 X 5L (DILUBAG [™])			●	●
	42048	Half-Fraser 6 x 225 ml	●	●	●	●
	AEB610419L	Half-Fraser 6 x 900 ml bottle	●	●	●	●
	42727	Half-Fraser 10 x 225 ml (mini-bags)	●	●	●	●
	AEB910913/4	Half-Fraser 4 X 3L (DILUBAG [™])	●	●	●	●
	AEB910915/2	Half-Fraser 2 X 5L (DILUBAG [™])	●	●	●	●
	AEB140412	Half-Fraser (base with antibiotics) 500 kg	●	●	●	●
	AEB140413	Half-Fraser (base with antibiotics) 5 kg	●	●	●	●
	AEB140417	Half-Fraser (base with antibiotics) 10 kg	●	●	●	●



For VIDAS[®] users:

ALOA[®] can be used as a confirmation method of VIDAS[®] Listeria positive assays.

01-18_09307722 006/GB/B / © bioMérieux • Document and/or pictures not legally binding. Modifications by bioMérieux can be made without prior notice • BIOMÉRIEUX logo, API, ChromID, DiluBag, Rapidec, and Vidas are used pending and/or registered trademarks belonging to bioMérieux, or one of its subsidiaries or one of its companies. Any other name or trademark is the property of its respective owner. ALOA is a registered trademark of BioLife S.r.l.; AccuProbe is a registered trademark of Hologic Incorporated. • bioMérieux SA 673 620 399 RCS Lyon / Photos: bioMérieux, SHASHIN KOUBOU HYPERLINK, N. Bouchut / Printed in France • théria 398 160 242 RCS Lyon.