



AOAC Official Methods of Analysis 2020.02



GENE-UP[®] Salmonella (SLM2)

All human food products & production environmental samples

1

DETECTION

Environmental Samples
1 swab in 10mL BPW
1 sponge in 100mL BPW
18-24h at 42 ±1°C



Food Samples
25g at a 1:4 dilution
of pre-warmed BPW
18-24h at 42 ±1°C

20µL

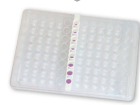


**Transfer to
Lysis tubes**



Lysis
5 min
2200 rpm

10µL



1. Tap PCR Tubes
2. Remove Caps
3. Visual check
4. Transfer lysed samples
5. Seal optical caps



Spin down 10 sec



<1h run

72h



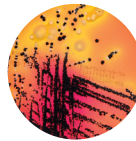
CONFIRMATION

ENRICHMENT STORAGE OPTION

2

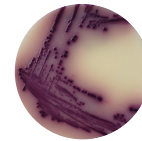
CONFIRMATION

2-8°C
72h



XLD

24 ± 3h at 35 or 37°C ± 1°C



ASAP[™]

24 ± 3h at 35 or 37°C ± 1°C



API[®] 20 E

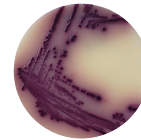


SX2

10mL



500µl
6-24h
41.5 or 42 ± 1°C



ASAP[™]

24 ± 3h at 35 or 37°C ± 1°C



API[®] 20 E

Salmonella range

- 423105
- GENE-UP[®] Salmonella (SLM2)
- Kit 192 tests
- 414057
- GENE-UP[®] Lysis
- Kit 192 tests
- 42043
- BPW broth
- 6 x 225mL
- 42042
- BPW broth
- 6 x 90mL
- AEB910303/4
- AEB910305/2
- BPW broth
- 4 x L / 2 x 5L
- 42729
- BPW broth
- 10 x 225mL mini-bags
- 43621 CHROMID Salmonella
- 20 plates
- M1031 XLD agar
- 10 plates
- AEB520090/
- AEB520089
- ASAP[™] agar
- 20/120 plates
- 42121/
- 410370
- SX2 broth
- 20/100 tubes
- 20100
- API[®] 20 E
- 25 strips
- MGNF42
- Salmonella spp Latex kit 50 test

PIONEERING DIAGNOSTICS



AOAC Official Methods of Analysis 2020.02



GENE-UP[®] Salmonella (SLM2)

Raw Beef Short Protocol

1 DETECTION

2 CONFIRMATION

25g in 225mL
Pre-warmed BPW



50g to 375g
1:4 dilution
Pre-warmed BPW

8-24h at 42 ± 1°C

10-24h at 42 ± 1°C

20µL



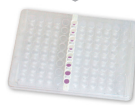
Transfer to
Lysis tubes



Lysis
5 min
2200 rpm

2-8°C

10µL



1. Tap PCR Tubes
2. Remove Caps
3. Visual check
4. Transfer lysed samples
5. Seal optical caps



Spin down 10 sec



<1h run

72h



CONFIRMATION

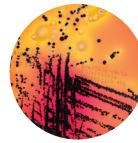
2-8°C
72h



Enriched sample

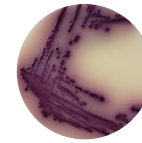
10mL

10µL



XLD

24 ± 3h at 35 or 37°C ± 1°C



ASAP[™]

24 ± 3h at 35 or 37°C ± 1°C



API[®] strip ID32E or 20E or VITEK 2 GN or VITEK MS

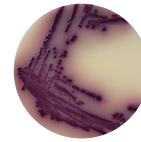
SX2

10mL

500µL

6-24h

41.5 or 42 ± 1°C



ASAP[™]

24 ± 3h at 35 or 37°C ± 1°C



API[®] strip ID32E or 20E or VITEK 2 GN or VITEK MS

Salmonella range

- 423105
- GENE-UP[®] Salmonella (SLM2)
- Kit 192 tests
- 414057
- GENE-UP[®] Lysis
- Kit 192 tests
- 42043
- BPW broth
- 6 x 225mL
- 42042
- BPW broth
- 6 x 90mL
- AEB910303/4
- AEB910305/2
- BPW broth
- 4 x 3L / 2 x 5L
- 42729
- BPW broth
- 10 x 225mL mini-bags
- AEB125980/
- AEB526760
- SALSA[™] agar
- 10/20 biplates
- AEB523400
- AEB523399
- XLD agar
- 20 / 120 plates
- AEB520090/
- AEB520089
- ASAP[™] agar
- 20/120 plates
- 42121/
- 410370
- SX2 broth
- 20/100 tubes
- 20100
- API[®] 20E
- 25 strips
- MGNF42
- Salmonella spp Latex kit 50 test

Always consult the latest package insert available from our technical library. Contact your local representative for more details.